

EXTERNAL FINISH:
 FULL REPAINT IN RAL 9004 (SIGNAL BLACK)
 HIT AND MISS CLADDING (50:50) IN TREATED TIMBER BATTENS

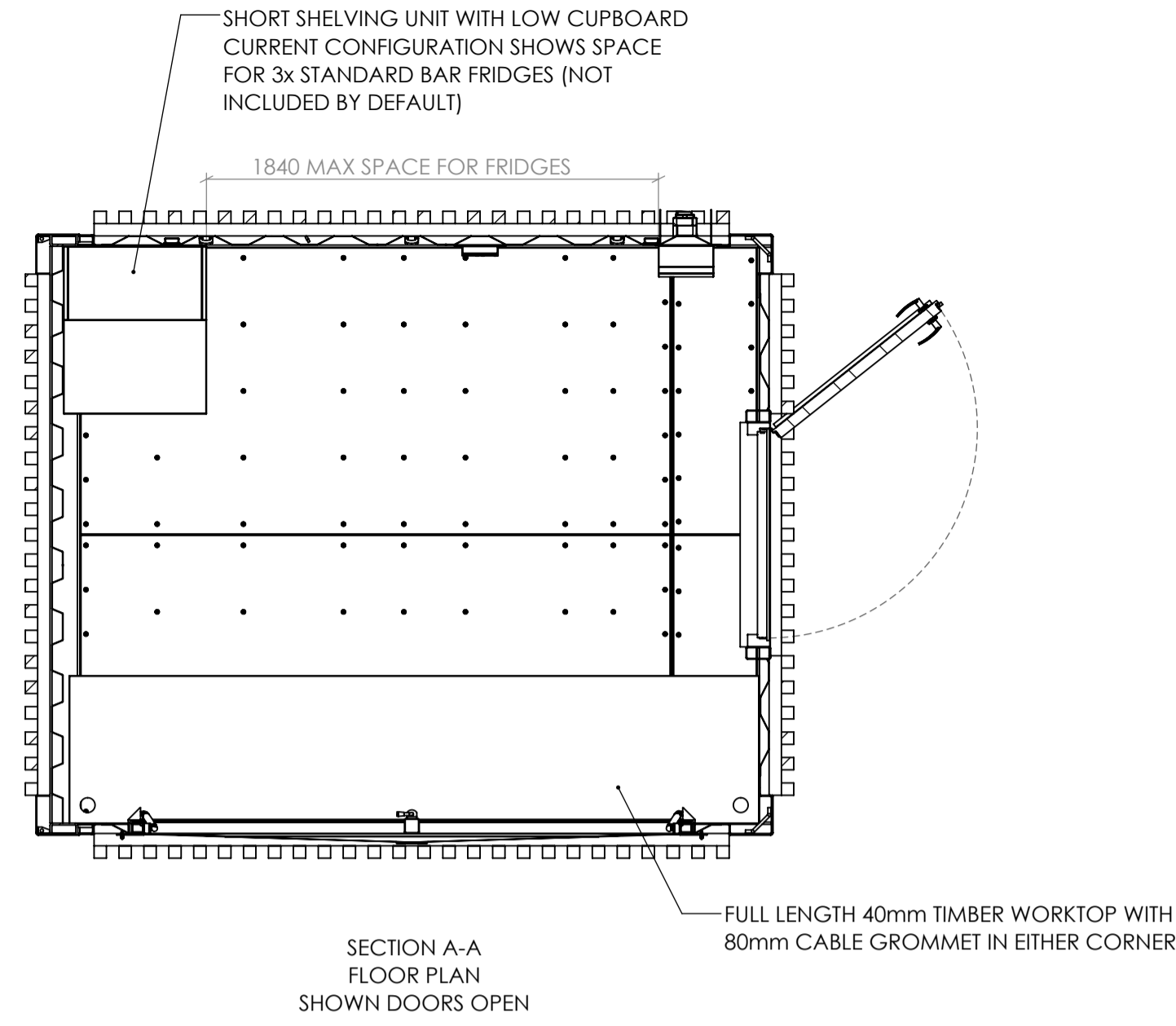
INTERNAL WALL/CEILING FINISH:
 FULL REPAINT IN ANY CLASSIC RAL COLOUR

FLOOR FINISH:
 STANDARD CONTAINER FLOORING
 28mm MARINE PLY/LAMINATED BAMBOO

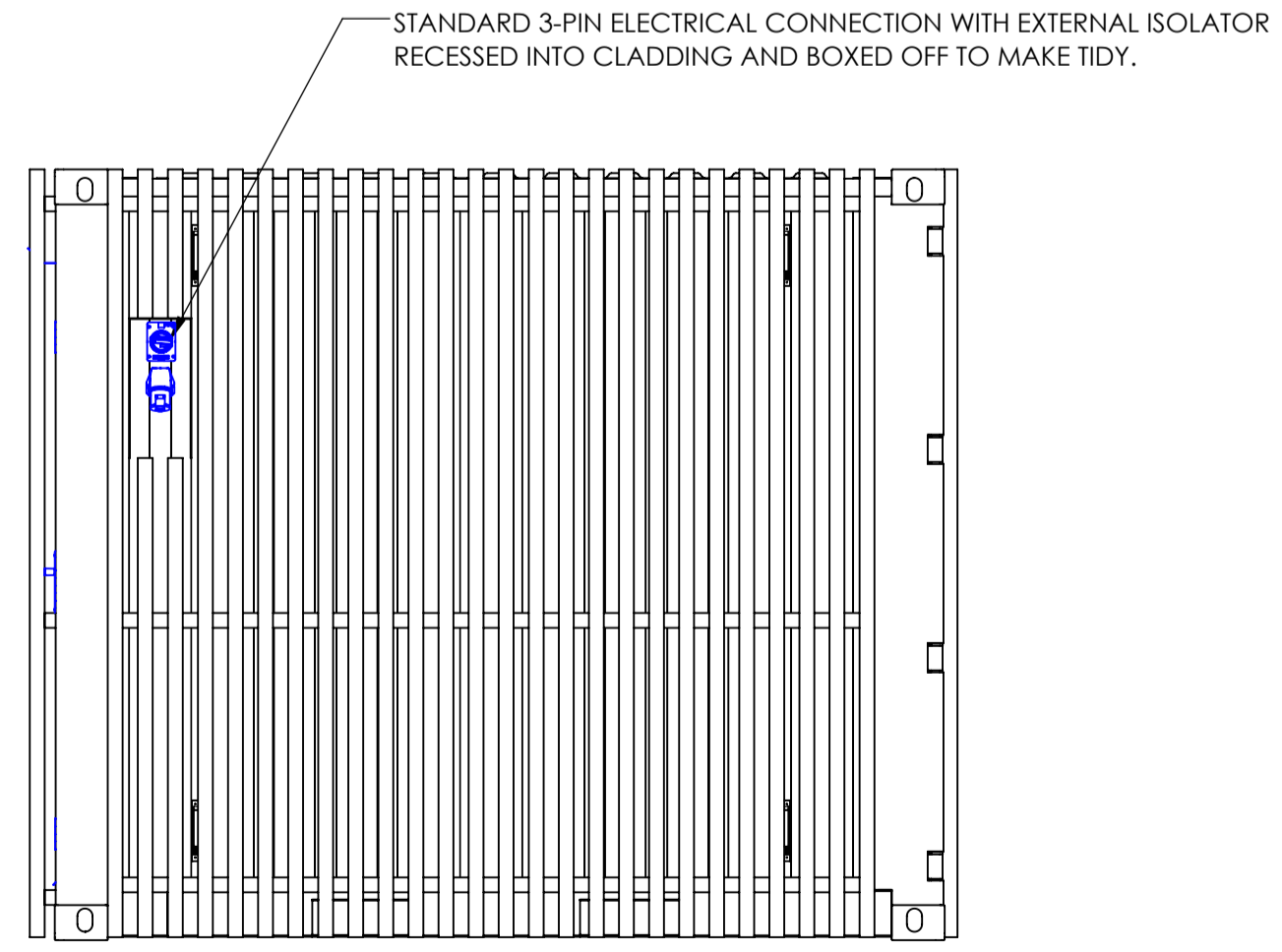
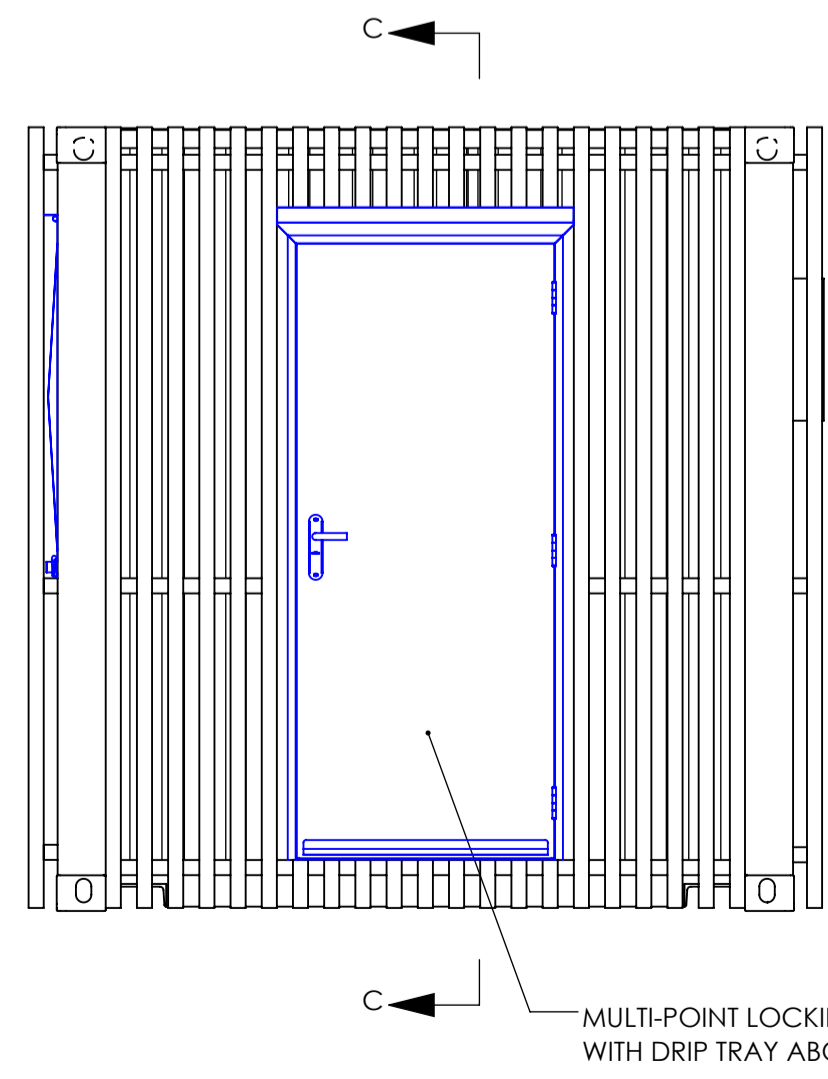
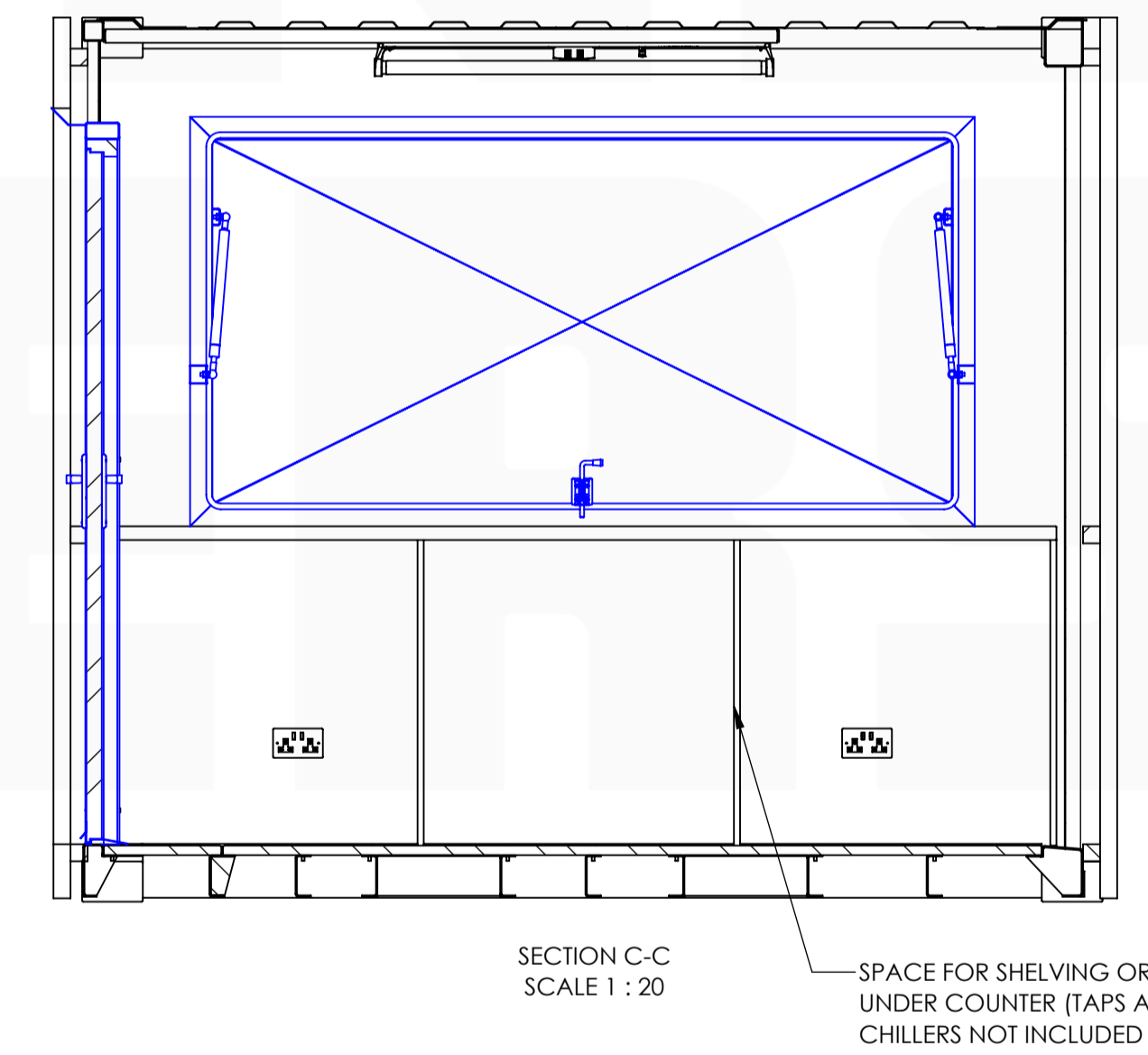
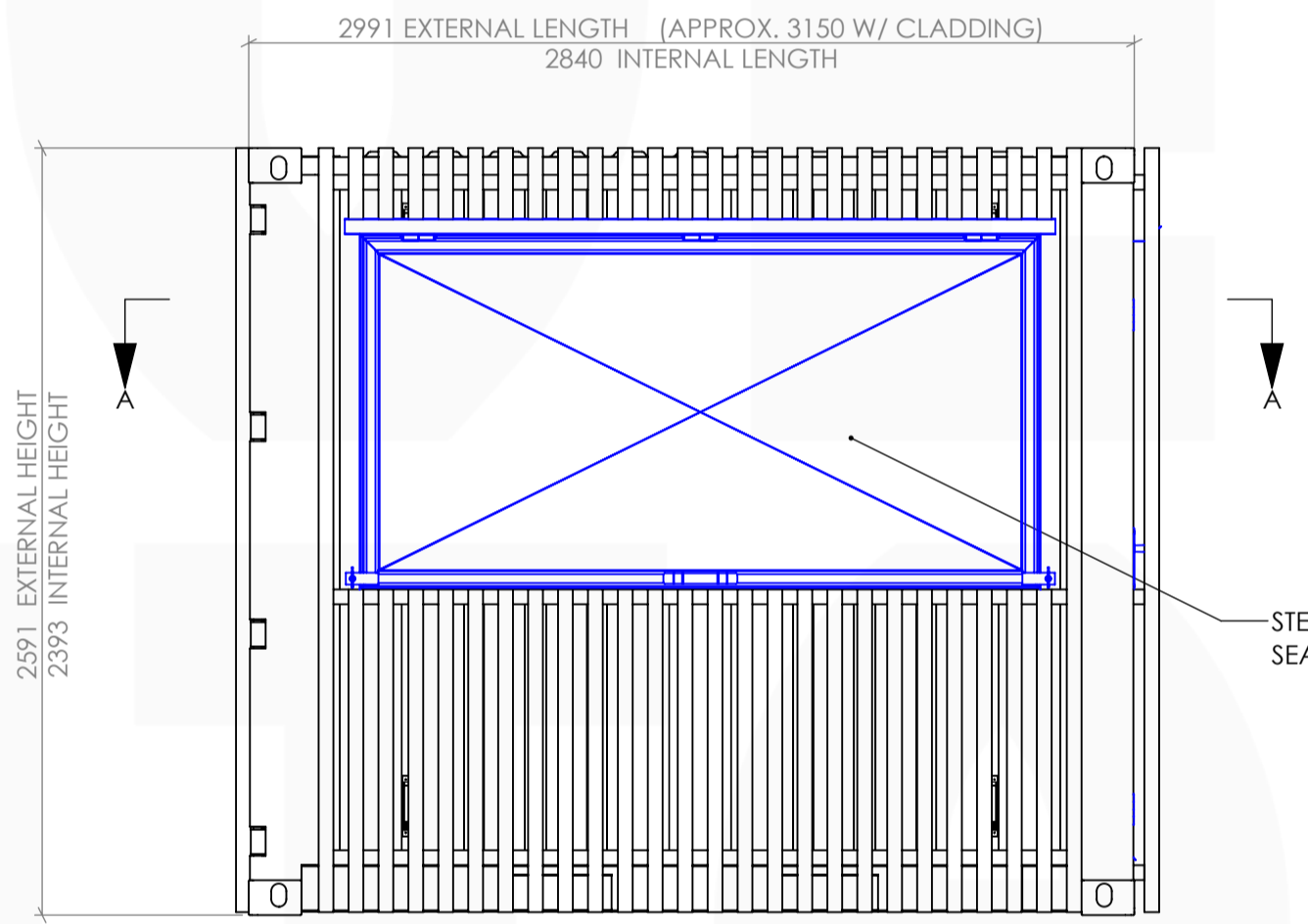
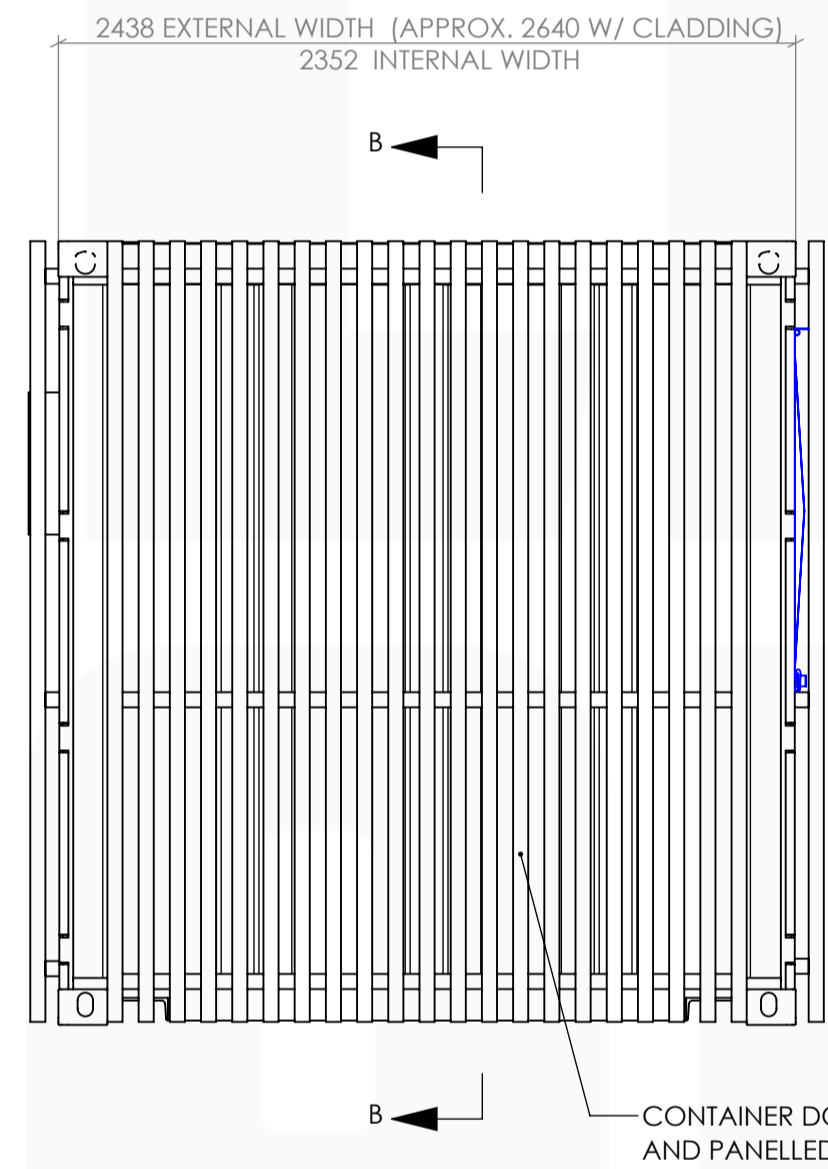
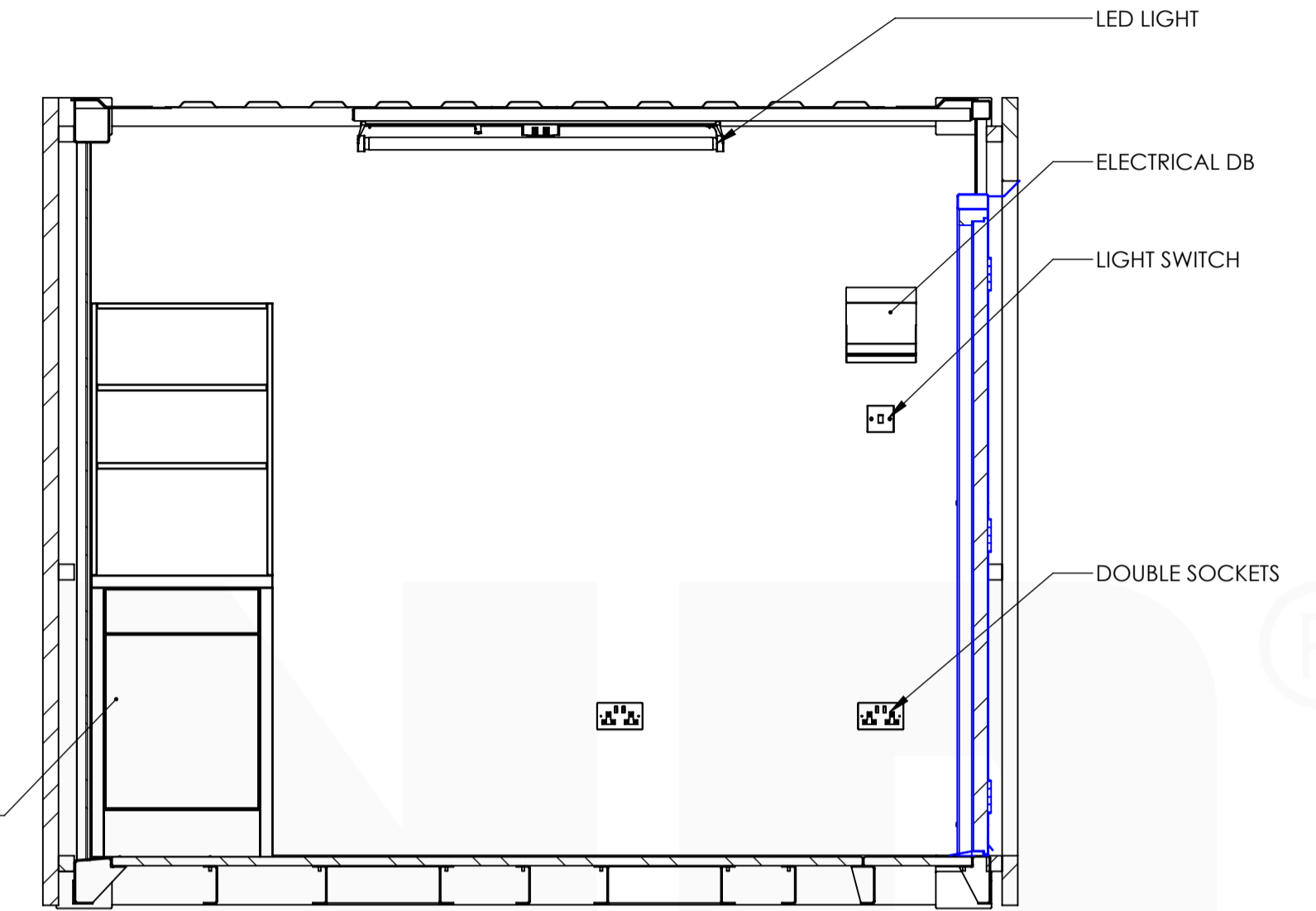
WORKTOPS:
 40mm SOLID OAK

CARCASSES/UNDERCOUNTER SHELVING:
 MATTE WHITE LAMINATED MDF

UPPER SHELVING:
 MATTE WHITE LAMINATED MDF



REVISIONS		
REV	DATE	DESCRIPTION
0	04 AUG 2020	INITIAL RELEASE



DOCUMENT NOTES		
1	PLEASE NOTE THAT THIS DRAWING IS INTENDED AS A GENERAL OVERVIEW OF ONE CONFIGURATION OF A TYPICAL 10' BAR. AS THEY ARE BUILT TO ORDER WE CAN ACCOMMODATE ALMOST ANY AND ALL VARIATION ON THIS DESIGN. PLEASE DON'T HESITATE TO LET US KNOW IF YOU REQUIRE ANY ALTERATIONS TO THE DESIGN SHOWN.	
2		
3		
4		
5		

CLEVELAND CONTAINERS. PRELIMINARY DRAWING: FOR INFORMATION ONLY
 REVISION: REVISION DATE: DO NOT SCALE DRAWING

PROJECT: CLEVELAND CONTAINERS 10' BARS

DRAWN	JM	DATE	04/08/2020
CHECKED		DESC:	GA & FLOOR PLAN
APP'VD		SCALE:	1:25

CLEVELAND CONTAINERS WILL NOT SIGN OFF A DRAWING FOR PRODUCTION UNTIL THE FULL AND FINAL DESIGN DETAIL HAS BEEN AGREED IN WRITING BY ALL PARTIES.

A1
 SHEET 1 OF 1