

EXTERNAL FINISH:
TOUCH UP EXTERNAL PAINT
FULL TIMBER CLADDING IN CUSTOMER SPECIFIED WOOD SPECIES
CAN BE CLAD VERTICALLY OR HORIZONTALLY

INTERNAL WALL/CEILING FINISH:
TIMBER STUD WALLS WITH SLAB INSULATION ALL ROUND
FINISHED WITH 12mm PLY BOARDS
PAINTED IN COLOUR

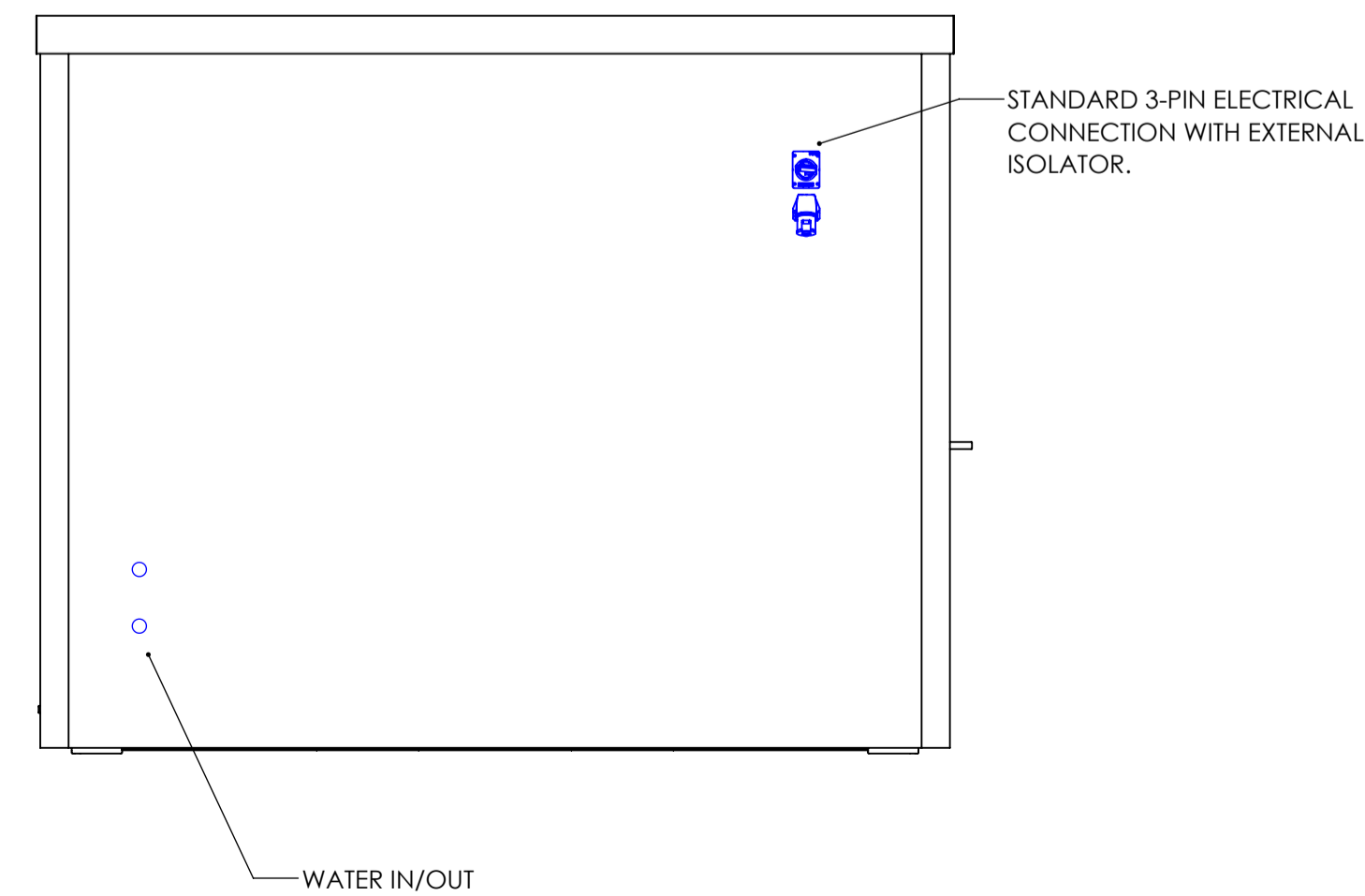
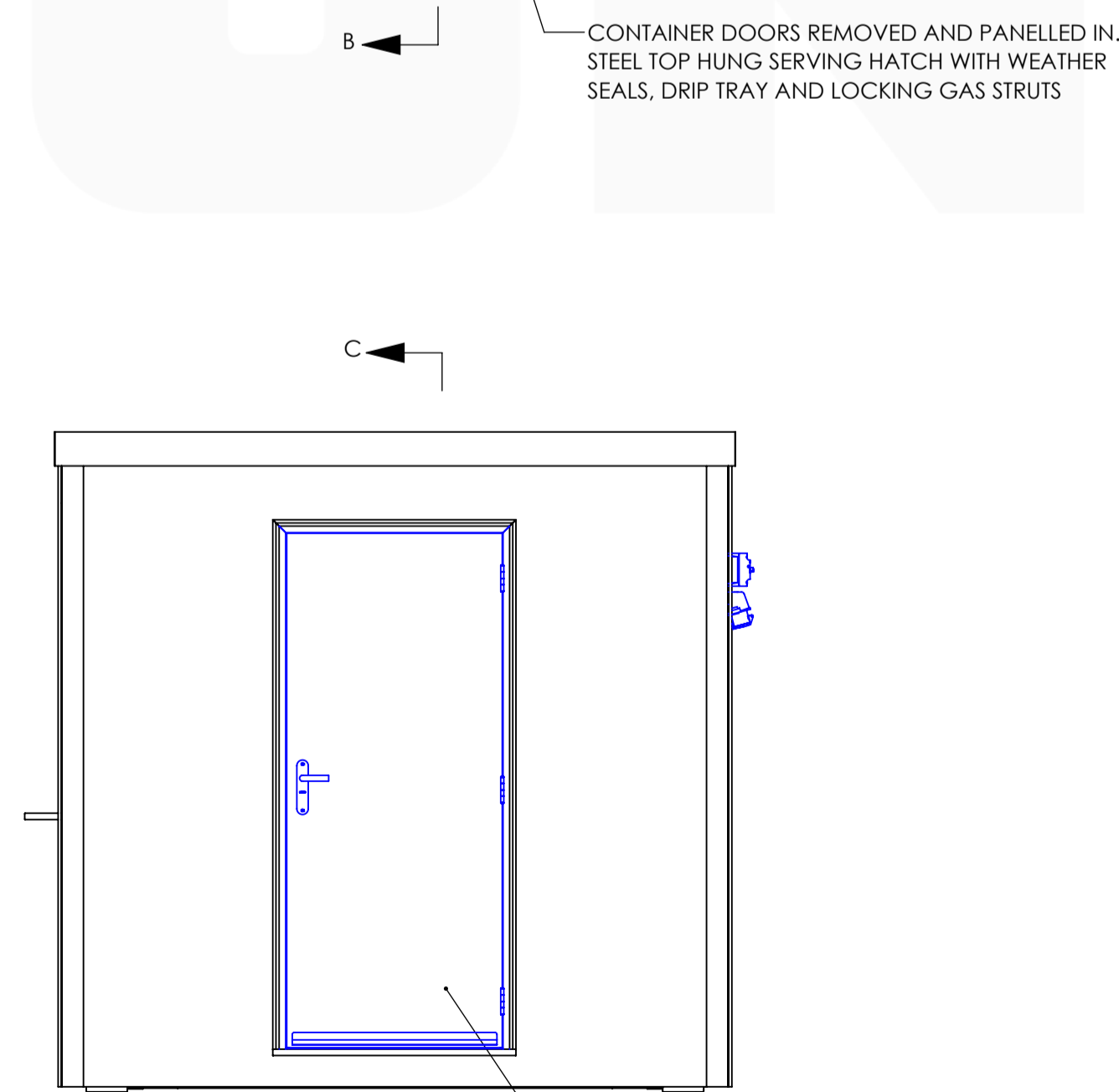
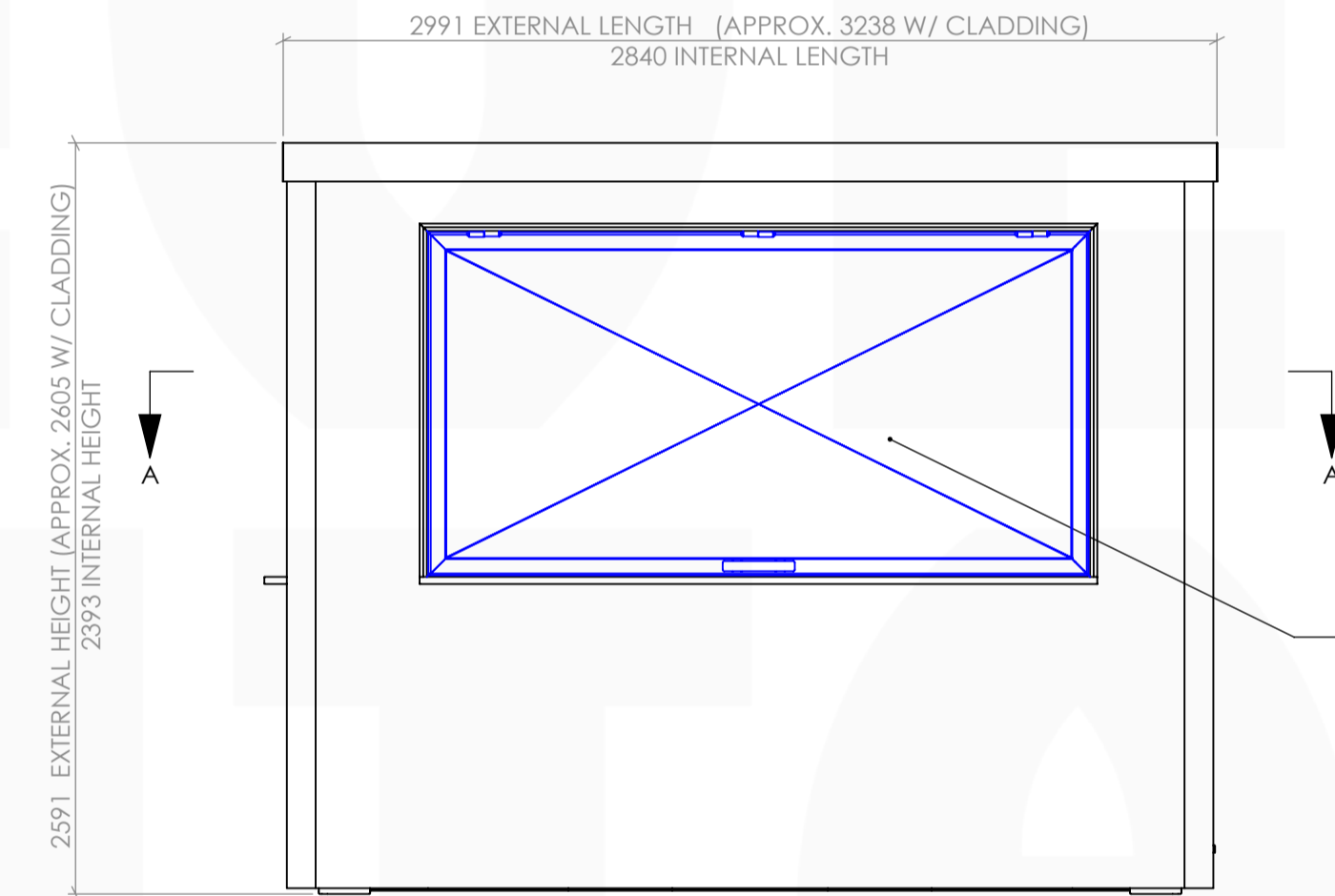
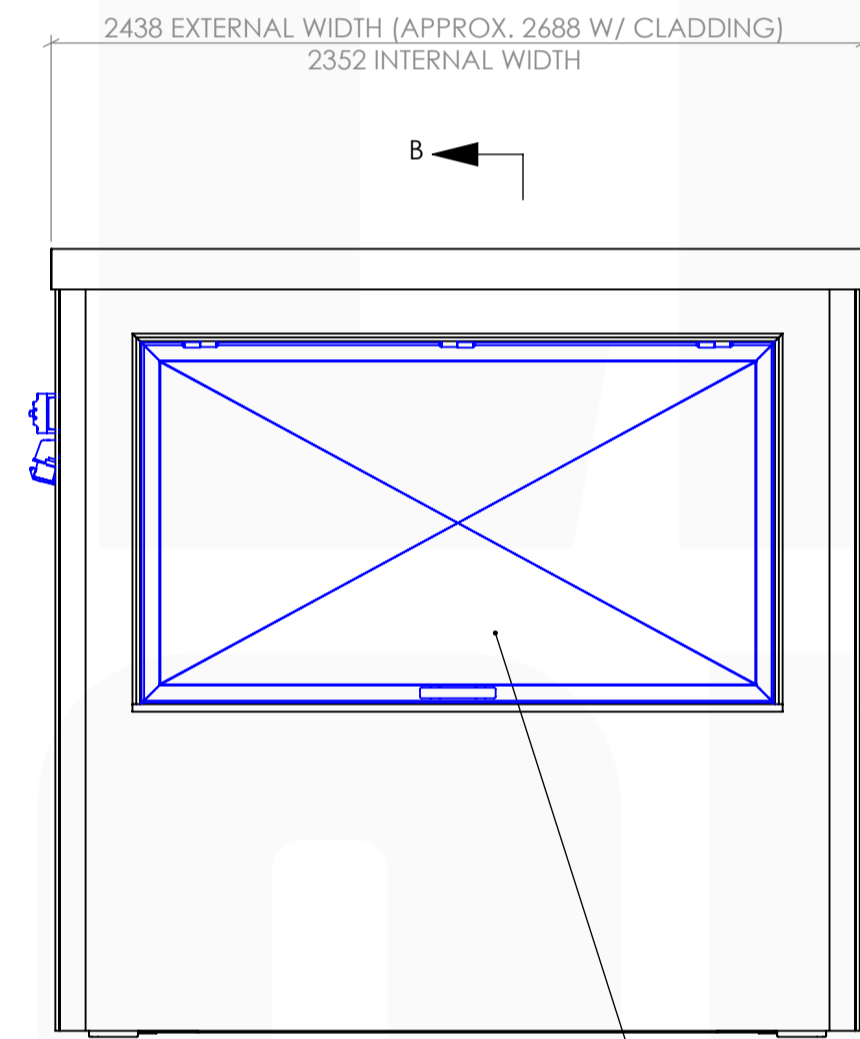
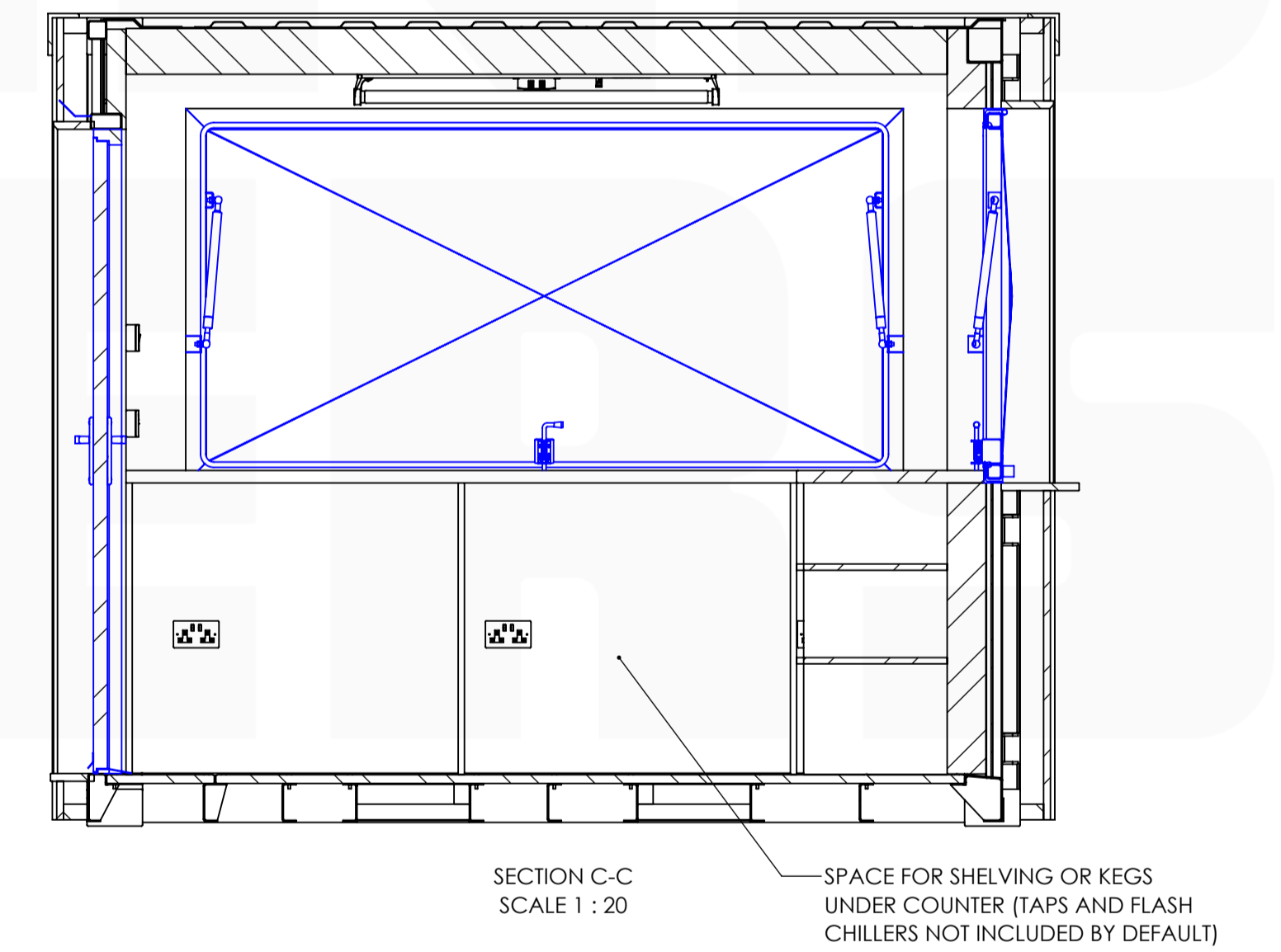
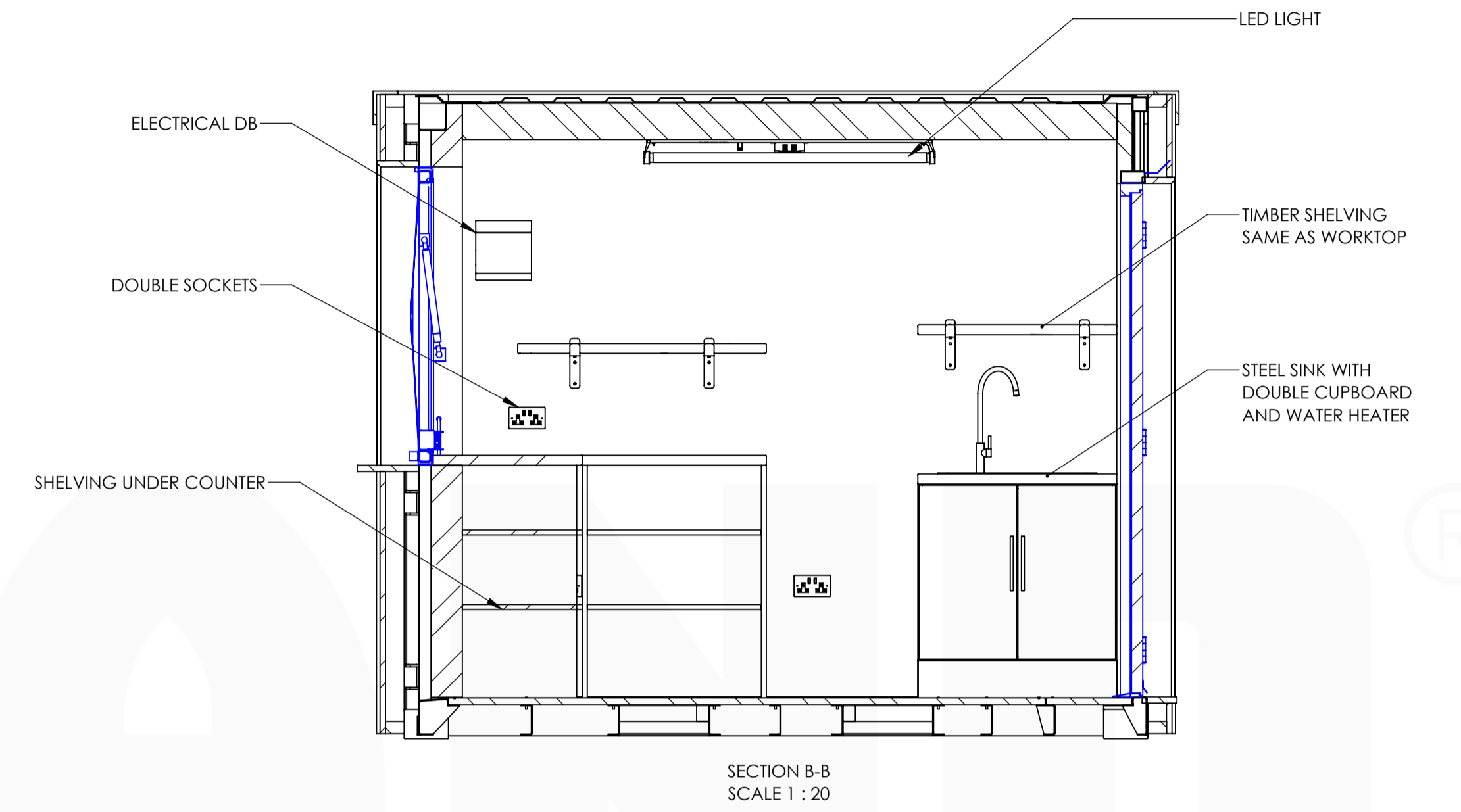
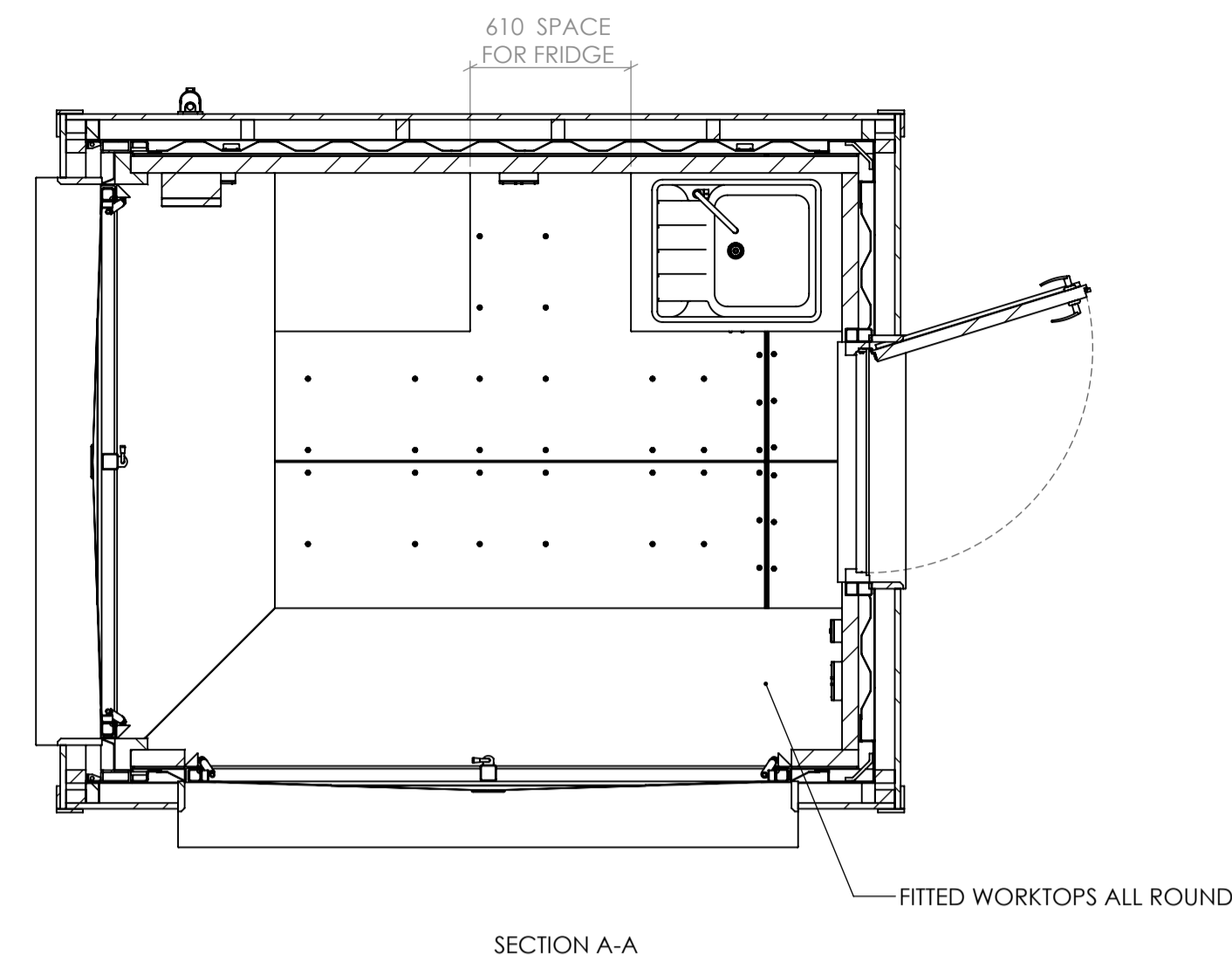
FLOOR FINISH:
STANDARD CONTAINER FLOORING
28mm MARINE PLY/LAMINATED BAMBOO

WORKTOPS:
40mm SOLID OAK

CARCASSES/UNDERCOUNTER SHELVING
MATTE WHITE LAMINATED MDF

UPPER SHELVING:
SOLID OAK, SAME AS WORKTOP WITH STEEL BRACKETS

REVISIONS		
REV	DATE	DESCRIPTION
0	04 AUG 2020	INITIAL RELEASE



CONTAINER DOORS REMOVED AND PANNELLED IN. STEEL TOP HUNG SERVING HATCH WITH WEATHER SEALS, DRIP TRAY AND LOCKING GAS STRUTS

STEEL TOP HUNG SERVING HATCH WITH WEATHER SEALS, DRIP TRAY AND LOCKING GAS STRUTS

MULTI-POINT LOCKING SECURITY PERSONNEL DOOR WITH DRIP TRAY ABOVE

DOCUMENT NOTES	
1	PLEASE NOTE THAT THIS DRAWING IS INTENDED AS A GENERAL OVERVIEW OF ONE CONFIGURATION OF A TYPICAL 10' BAR. AS THEY ARE BUILT TO ORDER WE CAN ACCOMMODATE ALMOST ANY AND ALL VARIATION ON THIS DESIGN. PLEASE DON'T HESITATE TO LET US KNOW IF YOU REQUIRE ANY ALTERATIONS TO THE DESIGN SHOWN.
2	
3	
4	
5	

CLEVELAND CONTAINERS.

PRELIMINARY DRAWING: FOR INFORMATION ONLY
REVISION: REVISION DATE: DO NOT SCALE DRAWING

PROJECT: CLEVELAND CONTAINERS 10' BARS

SIGNATURE	DATE
DRAWN JM	04/08/2020
CHECKED	
APP'VD	

DESC: GA & FLOOR PLAN

SCALE: 1:25

A1

SHEET 1 OF 1