



# EXTENDA LINE

The Premier Flat Pack Experts

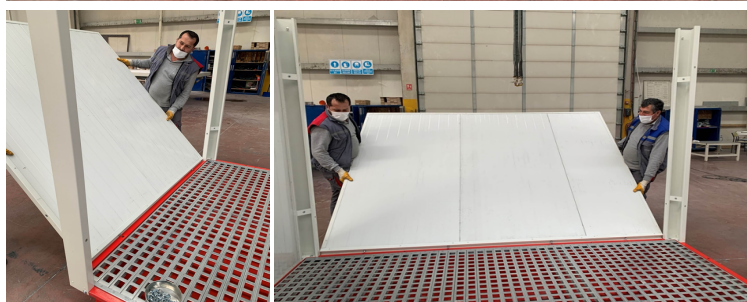
## Extendaline Insulated Coshh Assy Instruction



1)GRILLS ARE PLACED ON THE SUMP IN ORDER AS SHOWN.



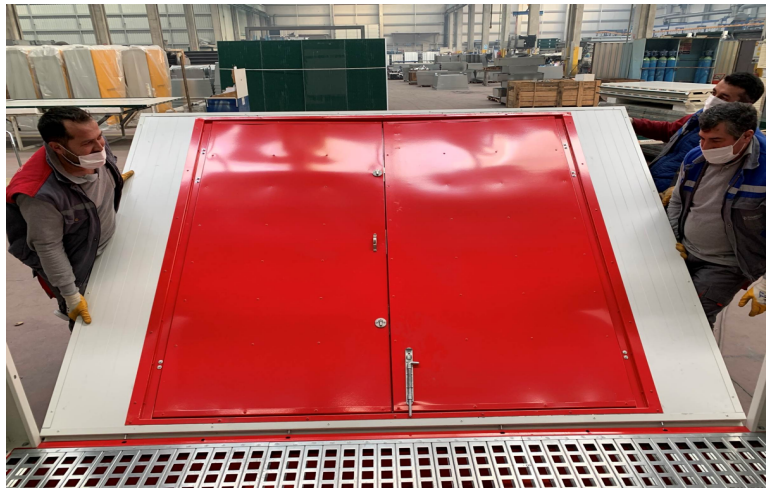
2)CORNER ELEMENTS ARE FIXED TO SUMP CORNERS WITH INTERNAL AND OUTER BOLT CONNECTIONS, AS SHOWN IN THE PICTURE..



3)THE PANELS ARE PLACED INTO THE SOCKETS ON THE SUMP BY THE PINS IN THE SUB-SECTIONS OF THE PANELS.



4)CORNER ELEMENTS AND PANEL ARE BOLTED AS SHOWN



5) IN THE SAME WAY, THE DOOR PANEL IS SITTED ON THE HOPPER AND CONNECTED TO THE CORNER ELEMENTS WITH THE HELP OF PINS



6) AFTER INSULATION MATERIAL IS INSIDE THE CORNERS, THE INSIDE CORNER COVERS ARE PLACED AS SHOWN IN THE PICTURE AND THEY ARE ASSEMBLED WITH THE HELP OF BOLT



7) THE ROOF IS PLACED AS SHOWN IN THE IMAGE AND IT IS READY TO BE CONNECTED TO LIFTING BRACKETS

8) LIFTING BRACKETS CONSISTS OF 2 PIECES, INTERNAL AND EXTERNAL PROFILE. IT IS FIXED TO THE ROOF CORNERS BY BOLTS ON TOP OF EACH OTHERS LIKE IN THE PICTURE.

